

# CONTENTS

## BluRay Player Contents



BluRay player



Power Cord & Remote

## Speaker Contents



Speaker  
Charging cable  
Audio cable

## Projector Contents



Projector & Remote  
(with lens cover)



HDMI to HDMI cable



Apple & Android  
HDMI Cables



Projector Power Cord

## Inflatable Screen Contents



110v Blower



600DD Inflatable  
Frame



16ft Tie Down  
Ropes x 4



4 Ground Pegs



Removable  
Washable  
Screen

## Cart Contents



Foldable Dolly Cart

# CONNECTING THE PROJECTOR

## Connecting to the BluRay player or other Device

1. Connect the projector to a power source with the power cord. You will likely need an extension cord and/or power strip.
2. Take the lens cap off of the lens.
3. Plug in the BluRay player to a power source.
4. Connect the projector to the BluRay with the HDMI cord provided in the projector kit.
5. Follow the same procedure to connect to a laptop or other HDMI source.

## Connecting a Phone or Tablet

1. Connect the projector to a power source with the power cord. You will likely need an extension cord and/or power strip.
2. Take the lens cap off of the lens.
3. If using an Apple device use the HDMI lightning adapter. Plug the HDMI end into the projector, and the other end into your device. If using an Android device use the Micro USB adapter. Plug the HDMI end into the projector and the other end into your device.

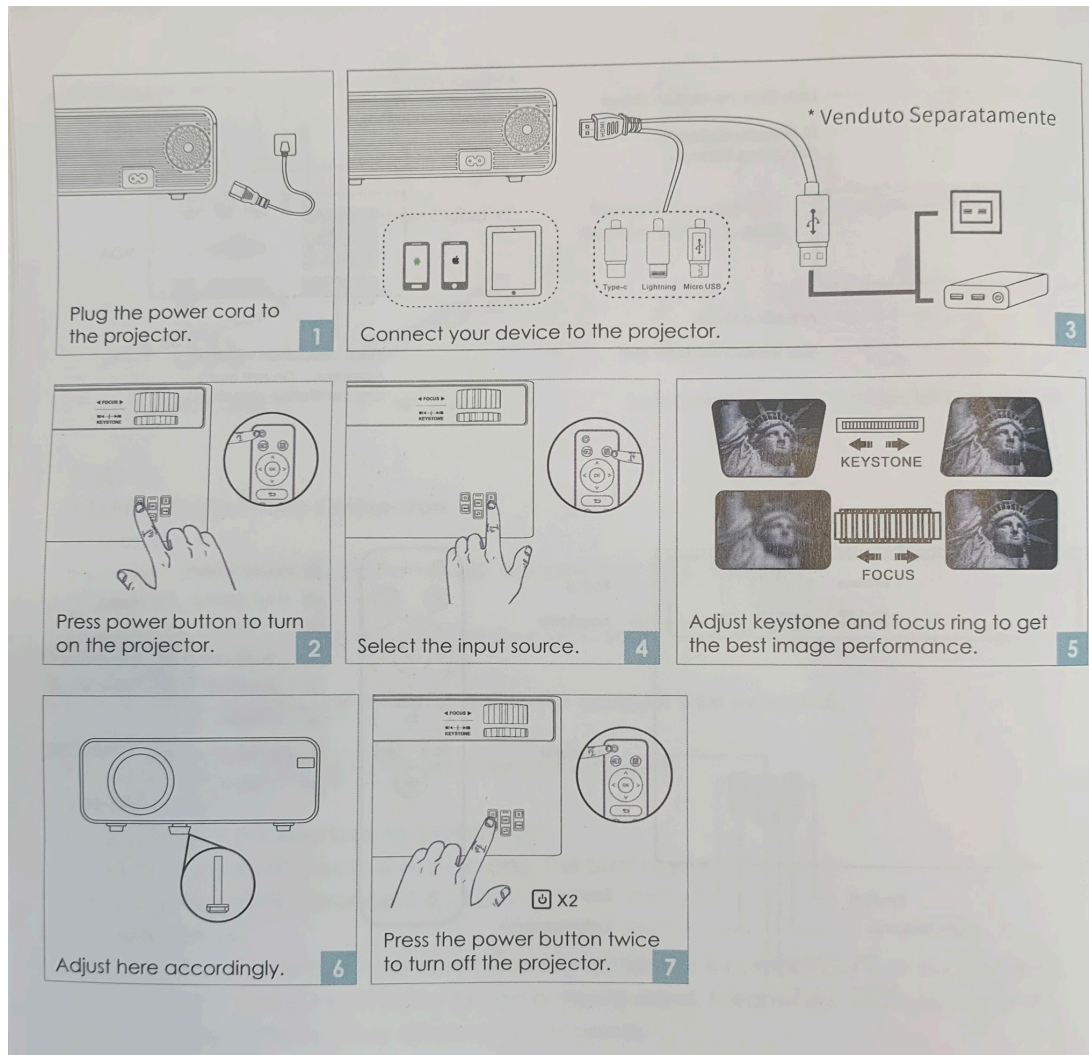
# CONNECTING THE SPEAKER

1. Use the provided Audio cable to connect one end in the side of the speaker, and the other end into the projector.



# USING THE PROJECTOR

1. Follow the instructions below.





# SETTING UP THE SCREEN

## 16ft. SCREEN

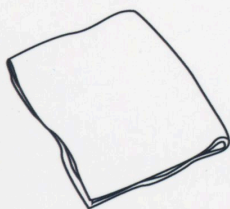
SET UP GUIDE



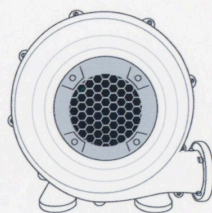
Holiday Styling



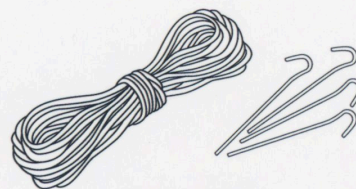
16ft Frame



Projection Screen

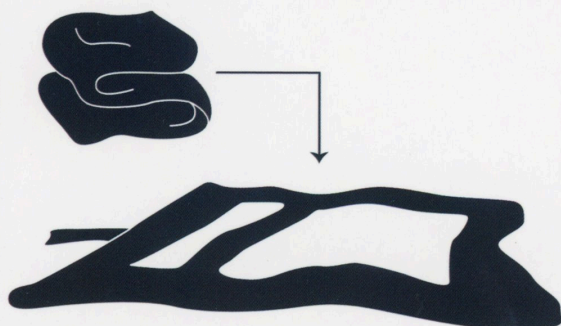


110V Blower



Ropes and Pegs  
for windy conditions

### PARTS



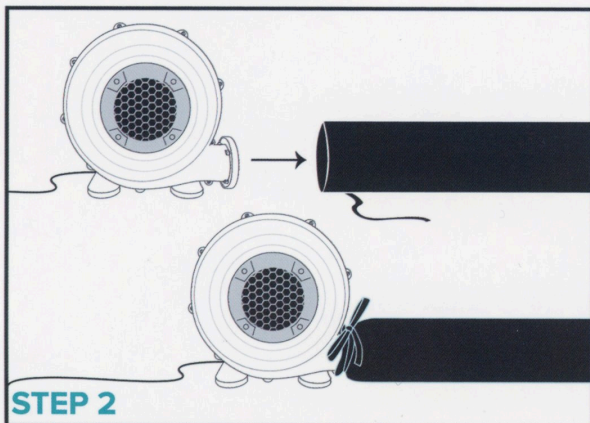
#### STEP 1

- Lay black frame flat, close deflation zipper and secure with velcro panel.



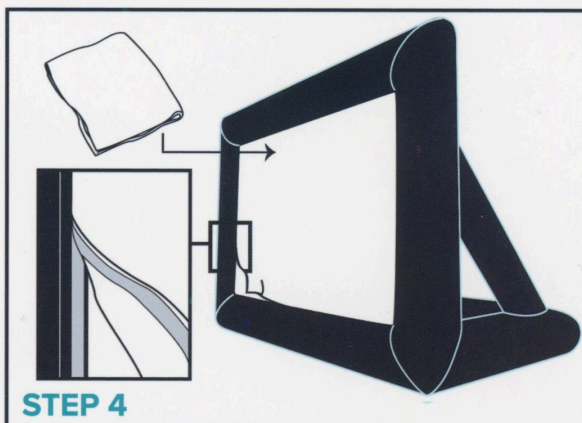
#### STEP 3

- Turn on blower for inflation (approximately 2 minutes). Keep blower on when in use.



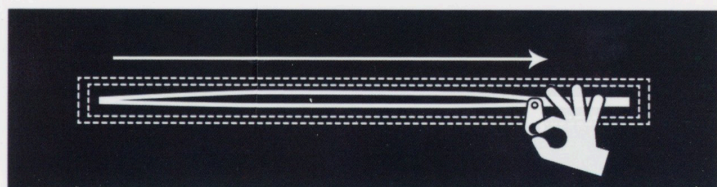
#### STEP 2

- Attach blower to tube & tie firmly.



#### STEP 4

- Attach white screen to frame from rear avoiding creases. It should be a snug fit.



### DEFLATION

Simply open deflation zipper for quick and easy pack down.



# FOLDING UP THE SCREEN



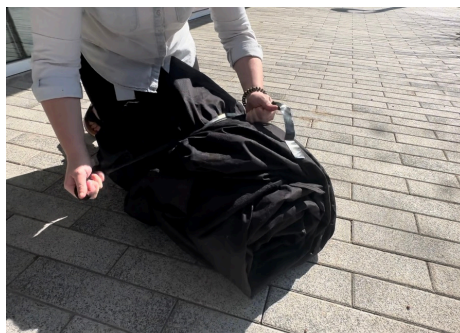
Begin by laying the screen out on the ground like the picture on the left.

Then roll over one side of the screen onto the other side, to create a single long line like the one pictured on the right.



Begin at one end and tightly roll the screen until you reach the other end. Pull in any pieces along the way to keep a tight wrap.

You may notice air pockets as you move along. Just keep rolling and the air will release.



When you reach the end, use the black rope to tie a knot and keep the screen tightly packed.

# FAQS

## **Why won't my Netflix/Hulu etc. accounts work with this projector?**

Streaming companies like Netflix, Amazon, and Hulu have banned their content from being used with a projector. Unfortunately, there is nothing we can do about this. A BluRay player is included for use. If you have own a downloaded movie or show on your device, they should be able to play the content from your device. Cables are provided for Apple and Android devices, as well as an HDMI cord for computers.

## **How do I return this to the library?**

You can return the kit to the Launch Pad during open hours. Otherwise, you can return the kit to the Circulation Desk at any time. Please return the kit on the provided cart with bungee cords secured.

## **Where can I rent DVDs or BluRays?**

Come to the Library! We have a huge variety of adult, children and family DVDs and BluRays for members to check out.

## **Can the BluRay player also play DVDs?**

Yes, a BluRay player can play both BluRays and DVDs.

## **How long is this kit checked out for?**

There is a two week checkout period for these kits. If you are done using it sooner, we appreciate you returning it earlier so that the next person on the waitlist can use it.

## **Is there a video that shows how to set up the screen?**

There is a video linked on the Launch Pad page of the website in the Launch Pad on the Go section with a demonstration of the setup.



## COLLAPSING THE CART

3. To fold handle flat, press down on the bottom bar to release lock and push handle forward. (See Figure 2)

**Figure 2**

